

# V-FFV24 Actuator Series

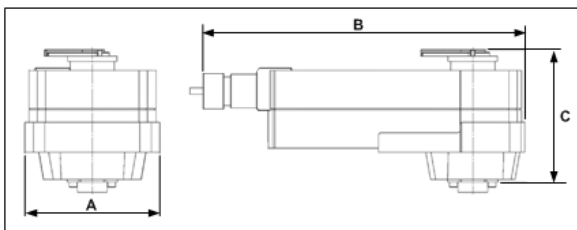
On/Off, Modulating  
Spring-Return (Fail-Safe)



Specification		On/Off†	(M) Modulating†
Control	Signal	On/Off	2-10 VDC, 4-20mA
	Input Impedance		100 kΩ (2-10VDC) 500 kΩ (4-20mA)
	Feedback Signal		2-10 VDC
Power	Voltage AC	24 VAC 50/60 Hz ± 20%	
	Voltage DC	24 VDC +20%/-10%	
	Overload Protection	Electronic overload protection	
	Consumption Running	5 W	5.5 W
	Consumption Holding	2.5 W	3 W
	Transformer	7.5 VA (Class 2)	8.5 VA (Class 2)
	Connection	<ul style="list-style-type: none"> <li>Terminals,</li> <li>Plenum rated cable 18 GA: 3 Ft.(1 m), 10 Ft. (3 m)</li> </ul>	
Operation	Runtime (Motor)	<75 seconds	95 seconds
	Runtime (Spring)	<75 sec @ -22°F to 122°F [-20°C to 50°C]	<20 sec @ -4°F to 122°F [-20°C to 50°C] <60 sec @ -22°F [-30°C]
	Manual Override	Hex Crank (5mm)	
	Rotation Angle	95°, adjustable using Screwed tabs	
	Rotation Direction (Motor)	Wire Polarity	Direction Switch
	Rotation Direction (Spring)	Reversible with CW/CCW mounting	
	Position Indicator	Visual	
	Noise Motor	<50 dBA	<40 dBA
	Noise Spring	<62 dBA	
	Housing	Protection	NEMA 2 / IP54
Rating		UL94-5VA	
Housing Material		zinc coated metal and plastic casing	
Temp.	Ambient	-22°F to 122°F (-30°C to 50°C)	
	Storage	-40°F to 176°F (-40°C to 80°C)	
	Humidity	5 to 95% non-condensing	
Agency Listing	<ul style="list-style-type: none"> <li>cULus UL 60730-1A/-2-14,</li> <li>CAN/CSA E60730-1:02,</li> </ul>		

† Rated impulse voltage 800V, Control pollution degree 3, Type of action 1.AA

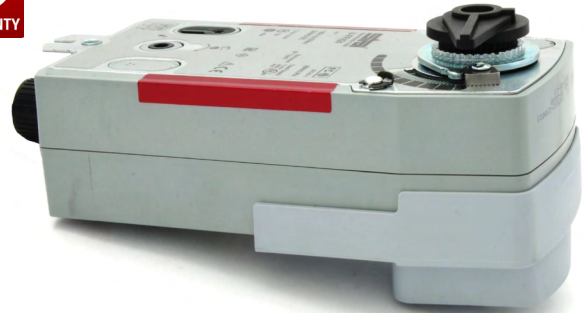
## Dimensions



A		B		C	
inch	mm	inch	mm	inch	mm
3.86	98	9.77	248.2	4.02	102

Actuators may also be powered by 24 VDC.

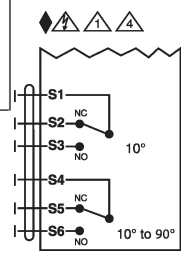
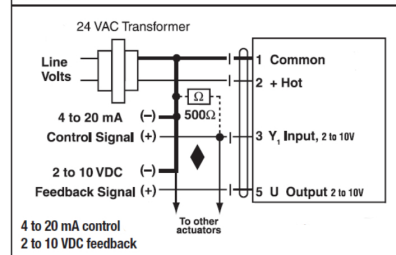
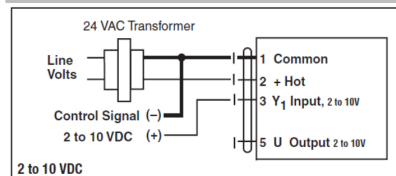
On/Off: V-FFV24  
Modulating: V-FFV24M  
Modulating+Switch: V-FFV24M-S



## WARNING

Connect the Actuator Common to the Controller Hot connection. Actuator must be installed by licensed or electrically trained technician. Failure to follow electrical safety precaution when working with live electrical connection could result in injury or death.

## Modulating Wiring



Apply only AC line voltage or only UL-Class 2 voltage to the terminals of auxiliary switches.

Two built-in auxiliary switches (2x SPDT), for end position indication, interlock control, fan startup, etc.

## On/Off Wiring

